

SMOKE GREY  
ESCO2A





SMOKE GREY  
ESCO2A

**Decking dimensions**  
220 cm x 13.8 cm x 2.3 cm  
(86.6" x 54.3" x 0.90")

## Why TimberTek WPC?

Our boards consist of solid planks renowned for their exceptional resilience.

### Low Maintenance

TimberTek's co-extrusion WPC preserves its color and features with ease, requiring no painting, staining, or sealing.



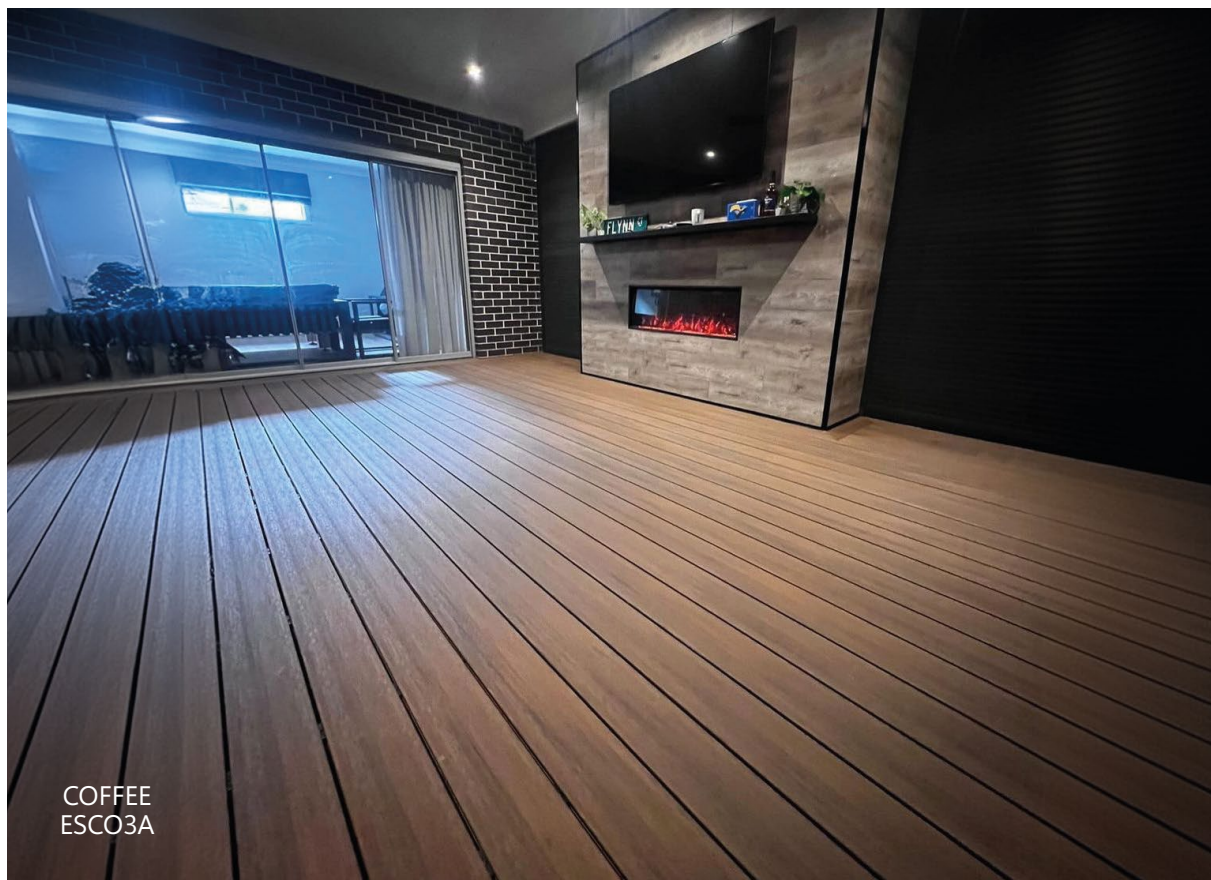
### Warranty

TimberTek's provides a 5-year limited warranty on all products suitable for both commercial and residential use. Additionally, our warranty is transferable to a second homeowner, making it a compelling selling point when you decide to relocate.

### Sub-floors

- 1) WPC Keels (5 yrs Warranty)
- 2) Red Meranti batons or Class 4 wood (5 yrs Warranty)
- 3) Aluminium System on Pedestal (25 yrs Warranty)





TEAK GREY  
ESCO1A



SMOKE GREY  
ESCO2A



COFFEE  
ESCO3A



DARK GREY  
ESCO4A

## TimberTek is a Full Solid WPC Decking Solution

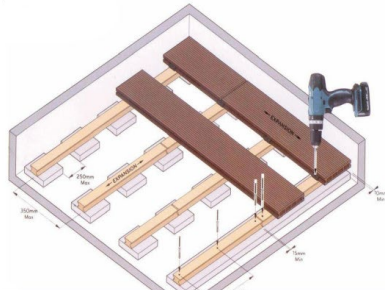


No Breaks



No Deformation

Deformation consequences  
of incorrect installation



Breaking Consequences  
of Hallow Decking

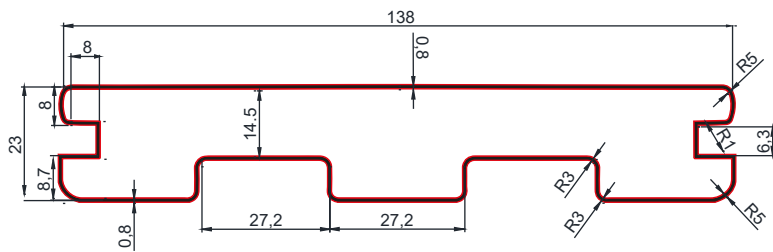
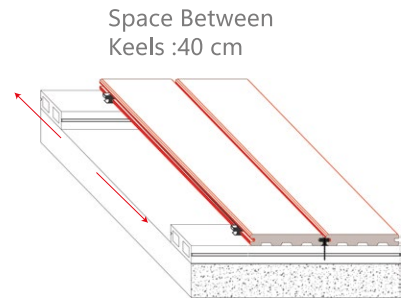
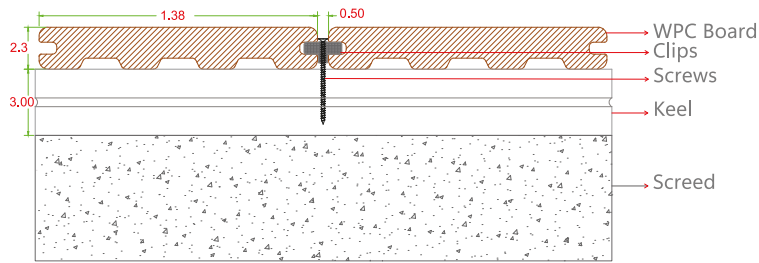


Hallow Plank





# SPECIFICATIONS



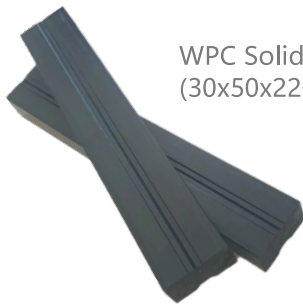
WPC Coextrusion  
Full Solid Decking  
(23x138x2200mm)

Length tolerance :  $\pm 2$ mm,  
width & thickness tolerance :  $\pm 0.5$ mm



Connection clips + Start/end clips  
(Black)

Stainless steel metal clips, used for  
fixing the decking



WPC Solid Joist  
(30x50x2200mm) + Screws (Black)



Coextrusion  
Skirting Board  
(50x50x2200mm)

In matching colors



## Water Absorption

Test Method	EN 15534-1:2014+A1:2017 Clause 8.3.1 & EN 317-1993		
Test Condition	Immersion into water at a temperature of (20±2) °C 48h		
Swelling	Length	Width	Thickness
	0.1%	0%	0%

## Expansion Rate

Coefficient of Linear Thermal Expansion	47x10-6 K-1
---	-------------

## Surface Appearance

Test Method	EN 15534-1:2014+A1:2017 Clause 8.3.3		
Test Condition	① Immersion in boiling water, 5h ② After 5h storage in boiling water, immediately immersed in cold water at (20±2) °C, 15min		
Test Results	Length	Width	Thickness
	Average : 0.1%	Average : 0.1%	Average : 0.3%
Appearance	Specimen has no crack		Pass
Requirement	Length Average : <0.3% Width Average : <0.7% Thickness Average : <4%		Pass

## Anti Slip : Class C

Slipperiness - Inclination Plan Test	<ul style="list-style-type: none"> <li>• Test method: Clause 6.4.3 of EN 15534 1:2014+A1:2017</li> <li>• Test person: grown-up person with bare foot</li> <li>• Test direction: Length direction</li> <li>• Test liquid: 1g/l neutral wetting agent solution</li> <li>• Requirements of EN 15534-4:2014: Class C (&gt;=24°)</li> </ul>	Test Result on face surface : 35, Class C <sup>1)</sup>
--------------------------------------	--	---

Note: 1): rating classes detailed as below

- Class A: 12°: the items with a test result from 12° to 17°;
- Class B: 18°: the items with a test result from 18° to 23°;
- Class C: 24°: the items with a test result from 24° upwards.





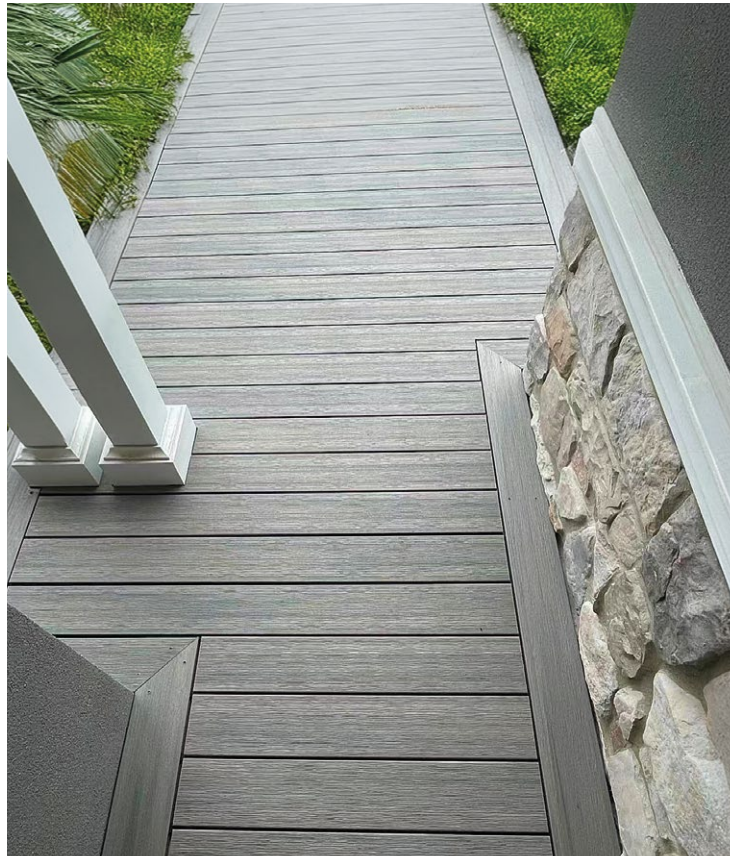
TEAK  
ESCO1A



SMOKE GREY  
ESCO2A



COFFEE  
ESCO3A



DARK GREY  
ESCO4A



SMOKE GREY  
ESCO2A



TEAK  
ESCO1A



COFFEE  
ESCO3A

Ask for our other outdoor products to compliment your TimberTek



## OUR OTHER DECKING BRAND



Flaxen  
HAG 04



Ochre  
HAG 10



Hickory  
HAG 11



## LANDSCAPE GRASS



## OUTDOOR FURNITURE



## OUTDOOR RUGS



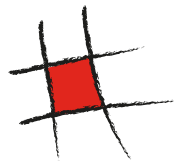
ligne roset<sup>®</sup>  
outdoor

**INFLUENCE**  
A NEW VISION OF OUTDOOR

**Lafuma**  
MOBILIER

**MAIORI**  
MADE IN ITALY  
PROVIDERS OF GOOD LIVING

**VINCENT SHEPPARD**



**TOLIX<sup>®</sup>**

**RAINBOW**  
OUTDOOR FURNITURE

**ARKEMA**  
DESIGN  
MADE IN ITALY

